



Autumn NEWSLETTER

(07) 827 7099

www.cambridgevets.co.nz

Welcome to our Autumn Newsletter of 2025!

Important Note:



Team News

We bid Helaine a fond farewell as she departs from our front counter to head to Windy Wellington for family. She has been a wonderful part of our team for too short a time and we wish her all the very best.

Important Note:



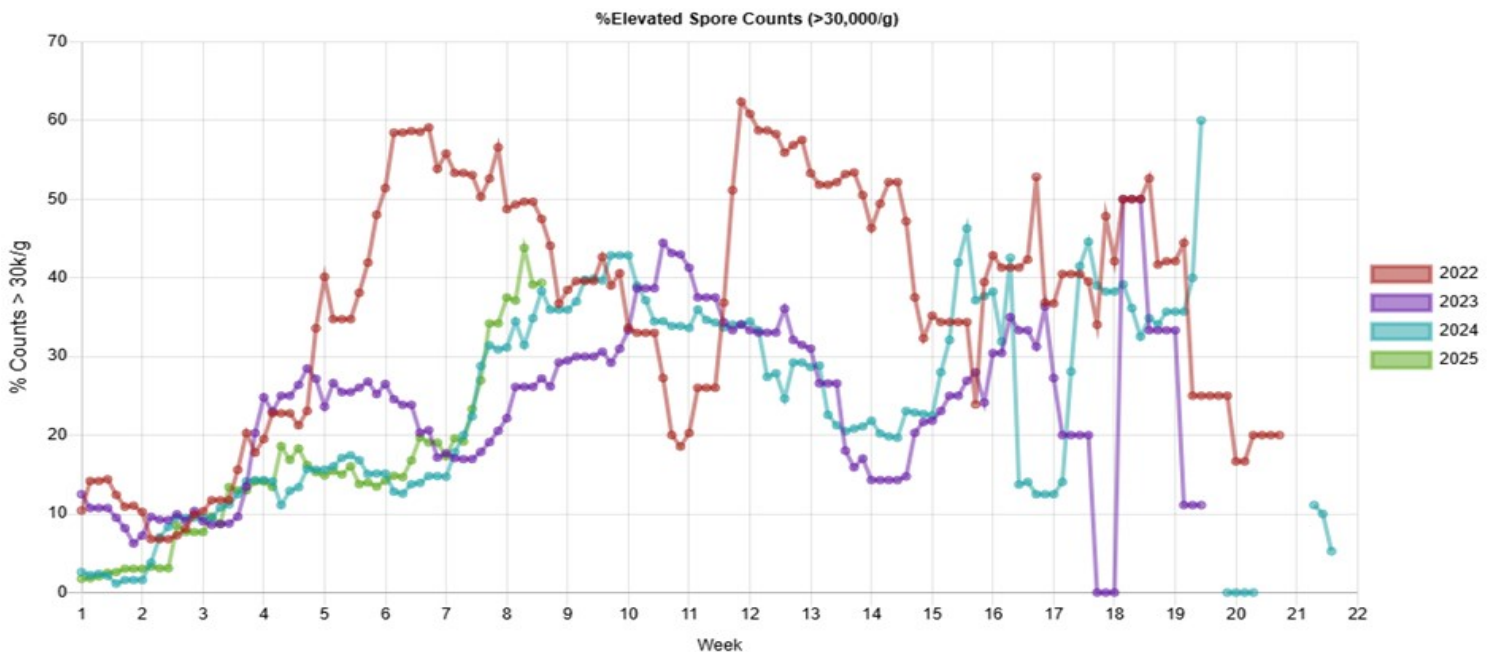
Dry Cow, Teat Seal

Please ensure that you have a current script for Dry Cow products before collecting from the clinic. Reception staff cannot hand out Dry Cow without Vet authorisation. For large orders we ask they be phoned in ahead of collection. Thank you.

Facial Eczema

Spore counts have been quite low this summer, but they may still jump up as the autumn rain comes across Waikato. We tend to see more FE cases in April-May, when zinc treatment has been stopped too early. Keep an eye on our FB page for up-to-date spore counts, and keep dropping in grass samples to the clinic for an accurate picture of the risk on your farm.

For more information on this disease and zinc dose rates - [Lifestyle Blocks - Cambridge Veterinary](#)



Mastitis

We saw more mastitis in summer this year than in spring for multiple farms.

Mastatest Results:

The Mastatest system is a great on-farm milk test, and it links to the vet clinic so we can collate the data and keep an eye on any results.

We can see from the clinical cases tested about 1 in 5 grew no bacteria or gram negative bacteria, which often do not need antibiotics. This is a great way to reduce unnecessary antibiotic use.

Most of the clinical cases tested were due to environmental bacteria, whereas 23% of sub-clinical milk samples tested for Staph aureus. These cows can then be marked for culling or dry cow therapy depending on their history.

We still offer milk cultures in clinic, which returns results in 24h and has no set-up cost for the farm!



*Estimated

* Subclinical Staph. aureus and CNS infections increase the BMSCC. Test the top 20 high cell count cows after every herd test for better management decisions.

Clinical Snapshot: Bacteria

Figure 1: Bacteria identified in report period

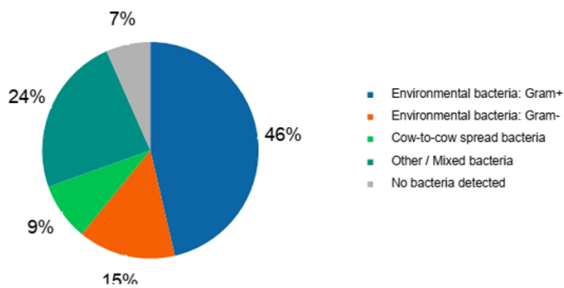
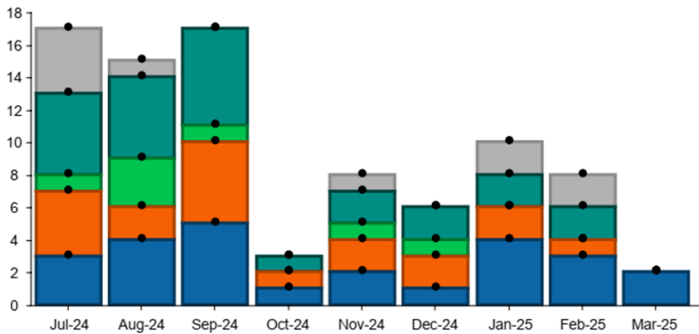


Figure 2: Annual clinical mastitis case distribution



Subclinical Snapshot: Bacteria

Figure 6: Bacteria identified in subclinical tests

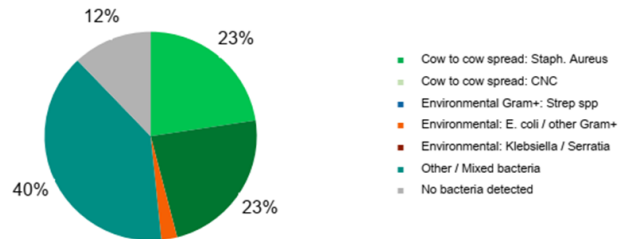
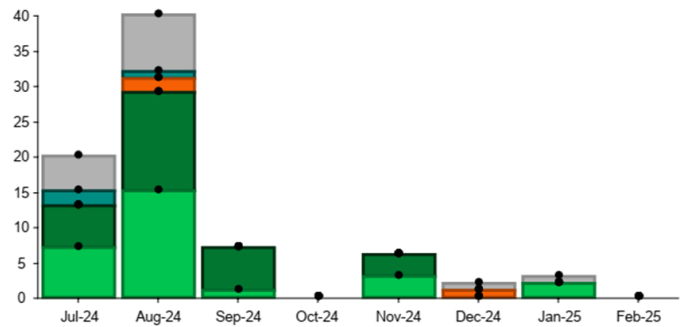


Figure 7: Annual subclinical case distribution



BCS

Some recent disappointing reproductive performances underscored the importance of cow condition. From a herd perspective, it is important to hit the BCS targets for 85% of the herd:

- 5.0 at calving (5.5 for heifers)
- Limit BCS loss into mating
- Minimal BCS average of 4.0

Cows generally need a month to gain 0.5 BCS, and will not gain weight in the last month of pregnancy. This means both BCS and Due to Calve date need to be taken into account for choosing a dry-off date.

We can help with this – we have several accredited BCS scorers who can give you an unbiased report.

If we have scanned your herd, our Infovets system will print an individualised Dry Off Report by combining the BCS with Due to Calve date.





DCT, Teat Seal and Drying off decisions

Well, as I write this, a drought had been declared, and some hard decisions are being made about drying off cows. This is a great opportunity to examine cell count, production, teat health, udder conformation and utilize strategic culling for herd improvement.

One of the decisions you will be facing is dry cow product strategy, so here is the annual reminder that a consultation is required to prescribe products for drying off your herd. We need to look at Milk Quality and Udder Health KPIs for your farm to come up with a full management plan. Please book this in advance, and remember we need Bulk Cell Count, Herd Test data, Clinical Mastitis records, culture results etc. The easiest way is to ensure we have access via Infovet.

The Vet Code is clear we need to have justification for dry cow antibiotic therapy (DCAT). This should include bulk cell count, ISCC or RMT results, milk culture results, clinical mastitis history at the herd and individual level. At the moment we have to meet 3 - 5 criteria to justify blanket antibiotic DCT and we must have an Udder Health Plan to implement, which should include diagnostics and a milking visit. This will become even more stringent in the future with proposed code changes.

Another requirement is to ensure people administering RVMs are competent, providing advice / training on teat disinfection and administration.

Luckily, we have internal teat sealants available for uninfected cows, and a team that can help by either doing the insertion or by training up your staff to do it safely.



Repro

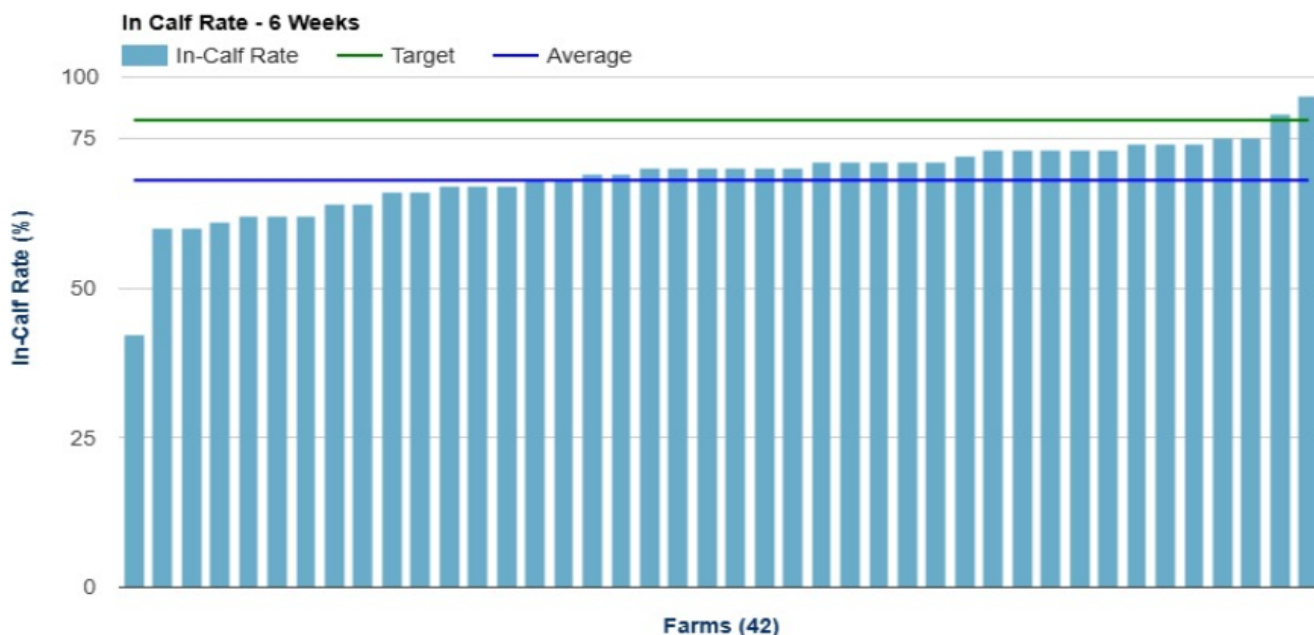
This year's scan results were generally pretty good, with a few delighted and a few disappointed: Average 6-week In Calf Rate was 68% (InCalf target 78%) compared to 67% last season

In Calf Rate

Selected Clinic: All Clinics - Selected Farm: All Farms

*Target rate supplied by DairyNZ

Year: 2024



Wearables a.k.a 'Cow Bling'

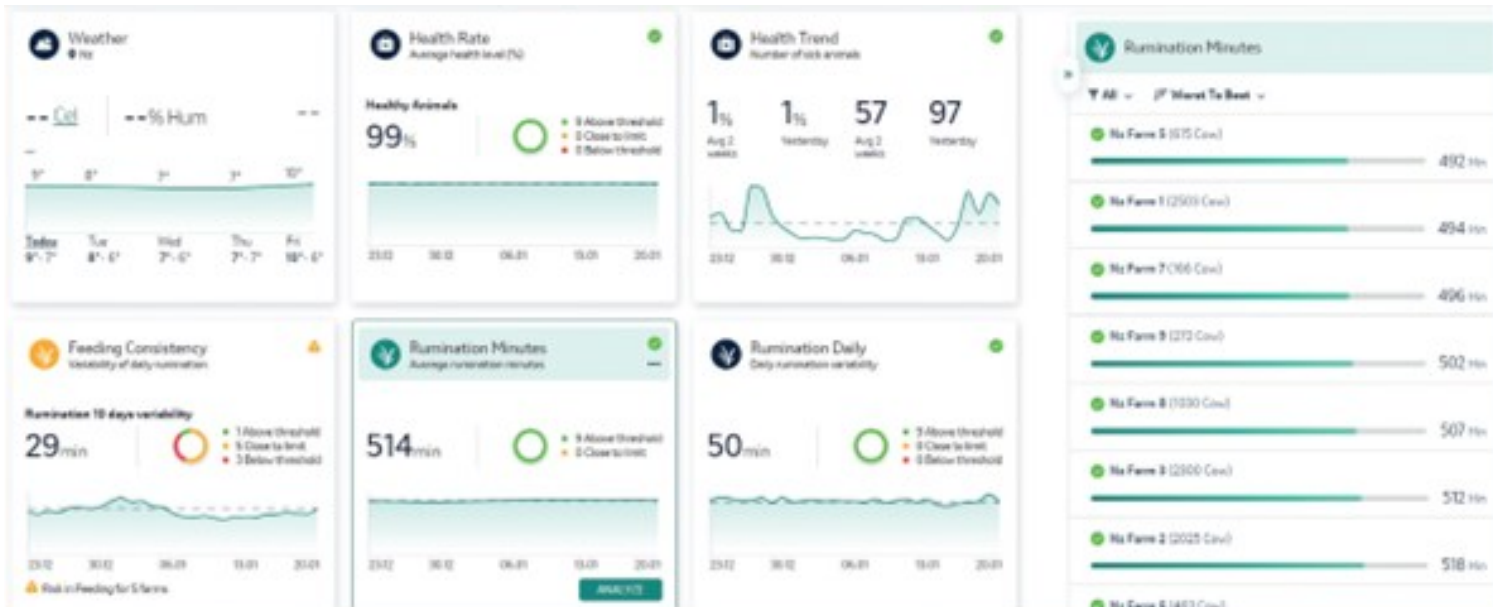
The new technology of cow wearables is really quite eye-opening as we see more and more applications. The All Flex collars now have an option to share data with your vet, which allows us to monitor some really important health parameters. This means the impact of any management changes can be assessed and tweaked in real time. DataLive will give the vet additional analysis, and allows benchmarking compared to other farms. Some of the key features include:

- Analysis of transition period rumination and health throughout the calving season using a weekly updated report.
- Monitoring pre-mating heats for different categories and lactation groups using a weekly updated report.
- Perform a retrospective analysis of the mating period through an automatically generated report.

Draw comparisons between groups over time and between farms, comparing various KPIs (not available in Sensehub).

We are quite excited about the positive impact this pro-active system could have on a farm, as milk production and reproduction all hinge on animal health.

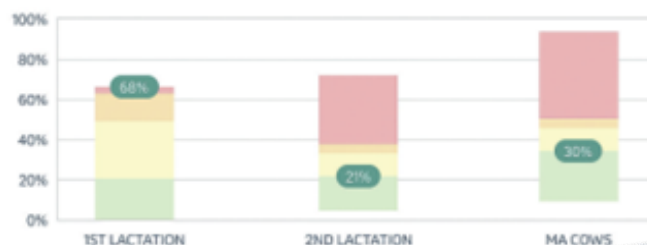
If you are using the AllFlex collar system, give us a ring to get signed up.



Transition Rumination



Health events



Facebook

Did you know that Cambridge Vets are on Facebook? We have a page for both the Companion Animal and the Production Animal Departments.

Follow our pages for topical news, offers and clinic Newsletters:



[Cambridge Vets Page](#)

[Cambridge Vets Farm Services Page](#)





A CAMBRIDGE REPERTORY THEATRE PRODUCTION OF

YES! PRIME MINISTER

BY ANTHONY JAY & JONATHAN LYNN

DIRECTED BY PETER BRISTON

3 - 17 MAY

TICKETS: GASLIGHT.NZ OR PAPERPLUS CAMBRIDGE

BY SPECIAL ARRANGEMENT WITH THE PLAYBUREAU

NexGard SPECTRA

BUY NEXGARD SPECTRA AND YOU COULD

WIN

A PET-FRIENDLY MOTORHOME ADVENTURE

Fancy a fun night out in May?

Cambridge's Gaslight Theatre is putting on an updated stage version of the BBC comedy series "Yes Prime Minister".

Tickets available from gaslight.nz

Box office = Gaslight Theatre Cambridge NZ



For convenience on the farm...

...and in the kitchen

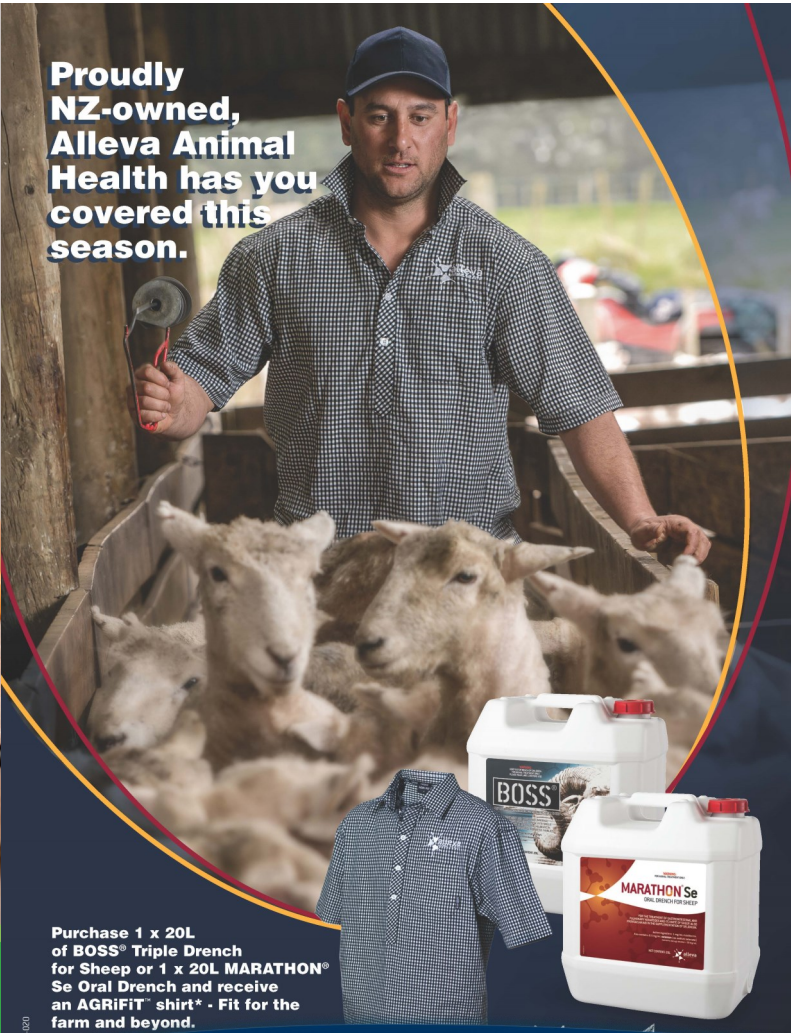


Purchase a 5L pack of **TURBO**® or **BOSS**® Pour-On and receive an 8L Air Fryer*. See your local veterinary practice for details.



TURBO® and BOSS® are registered trademarks of Alleva Animal Health Ltd. TURBO® pour-on (A011722) and BOSS® pour-on (A010817) are registered pursuant to the ACVM Act 1997. See www.foodsafety.govt.nz for registration conditions. *Available while stocks last.

Proudly NZ-owned, Alleva Animal Health has you covered this season.



Purchase 1 x 20L of **BOSS**® Triple Drench for Sheep or 1 x 20L **MARATHON**® Se Oral Drench and receive an **AGRIFIT**® shirt* - Fit for the farm and beyond.

(07) 827 7099 0800 226838

www.cambridgevets.co.nz